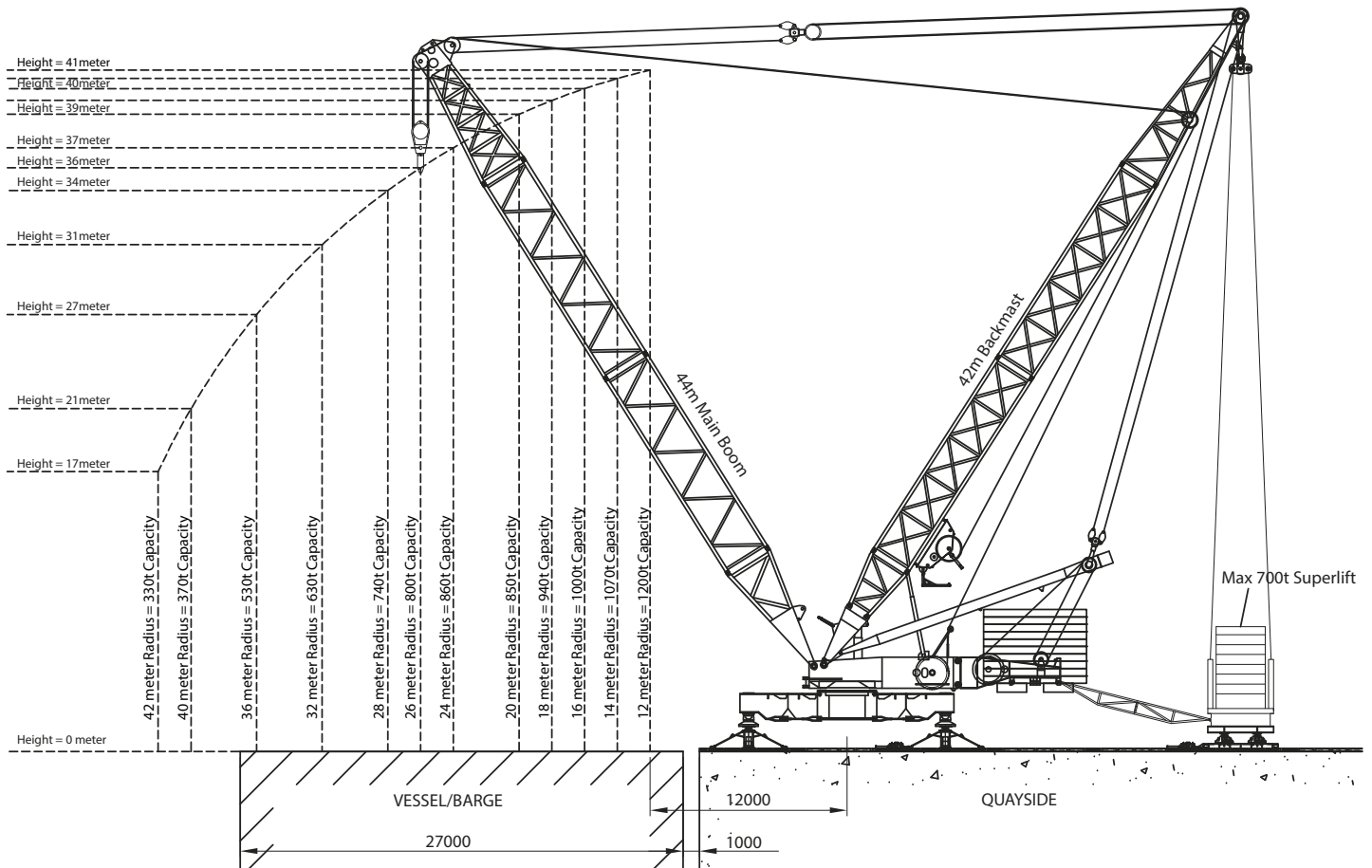




## Gottwald MK1500 with Max Superlift



### Drawing Notes

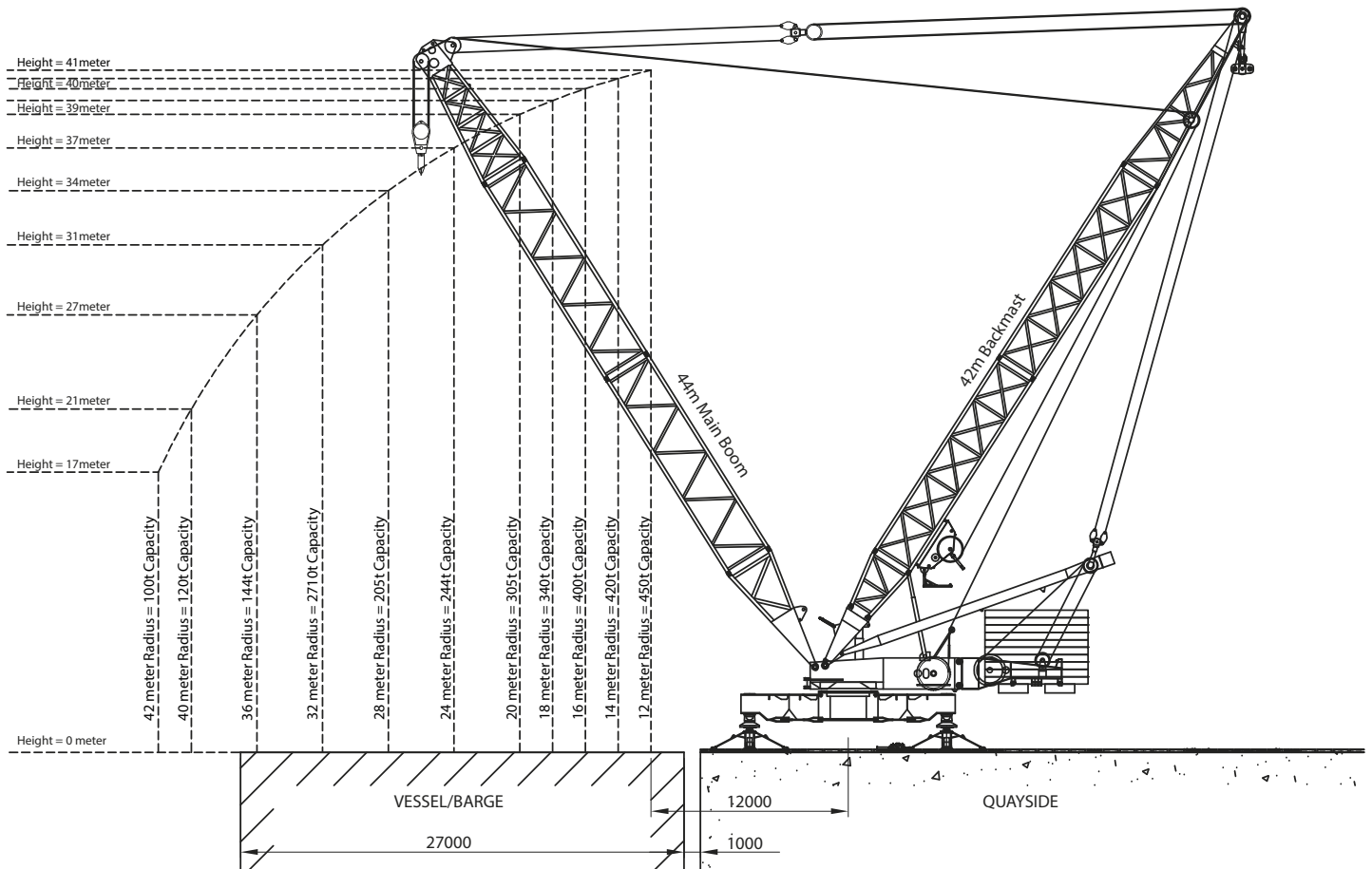
- All dimensions are in MM unless otherwise stated.
- All weights are in t (metric tonnes) unless otherwise stated.
- All details are provisional and are subject to confirmation.

### Technical Notes

- The Crane on this drawing may be upgraded to a larger capacity - contact OilMac for details.
- In the arrangement and orientation shown, worst case outrigger loads is 559.3t for each front outriggers & 541.1t for each of the rear outriggers.
- The crane has 250t to 1000t hook blocks
- The drawing shows a 44m boom but can be rigged to 86m.



## Gottwald MK1500 without Superlift



### Drawing Notes

- All dimensions are in MM unless otherwise stated.
- All weights are in t (metric tonnes) unless otherwise stated.
- All details are provisional and are subject to confirmation.

### Technical Notes

- The Crane on this drawing may be upgraded to a larger capacity - contact OilMac for details.
- In the arrangement and orientation shown, worst case outrigger loads is 559.3t for each front outriggers & 541.1t for each of the rear outriggers.
- The crane has 250t to 1000t hook blocks
- The drawing shows a 44m boom but can be rigged to 86m.